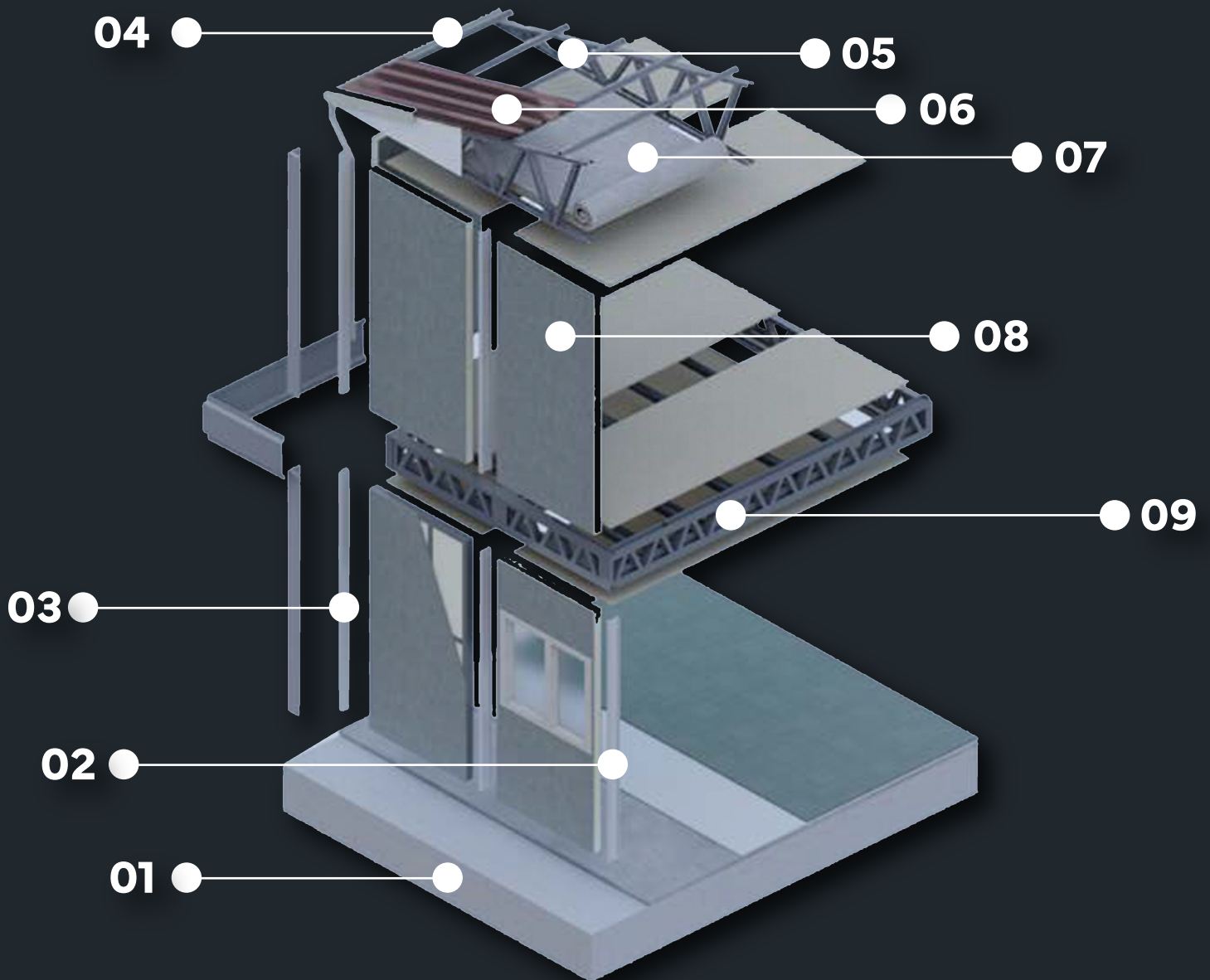




# CURRENT

PRODUCT CATALOG

# PREFABRICATED BUILDING SECTION





# PREFABRICATED BUILDING SECTION

**01) Ground Concrete:** Durable and sturdy concrete layer used to form the ground base.

**02)H Profile:** Galvanized steel profile in an "H" shape, used to connect wall panels and transfer vertical loads to the ground.

**03) Galvanized Corner Post:** Steel post designed to support and reinforce corners.

**04) Rain Gutter:** A system designed to collect and direct rainwater from the roof to the exterior.

**05) Roof Truss:** A structural element forming the roof's support system using diagonal profiles.

**06) Roof Covering:** The outermost layer of the roof. (Material optional)

**07) Mineral Wool:** Durable, fire-resistant fiber material used for insulation.

**08) Compressed Wall Panel:** Wall blocks created by bonding polystyrene foam between two cement-based wood particle boards (Betopan).

**09) Floor Frame:** Galvanized steel profiles used as structural flooring for multi-story buildings.





PM-1062





The PM-1062 project is a 62 m² prefabricated building designed with a 1+1 room layout. It focuses on creating spacious living areas in a compact structure. This model is ideal for crafting your personal retreat, whether it's for working, relaxing, or escaping on a vacation. Every detail is designed with your needs in mind.





PM-1065





The PM-1065 project covers an area of 65 m<sup>2</sup> and features a 2+1 room layout. It offers a spacious living area at an affordable price. Perfect for long-term family living or as a summer house, this model is both budget-friendly and highly functional. It delivers safety, comfort, and excellent value for money.





PM-1072





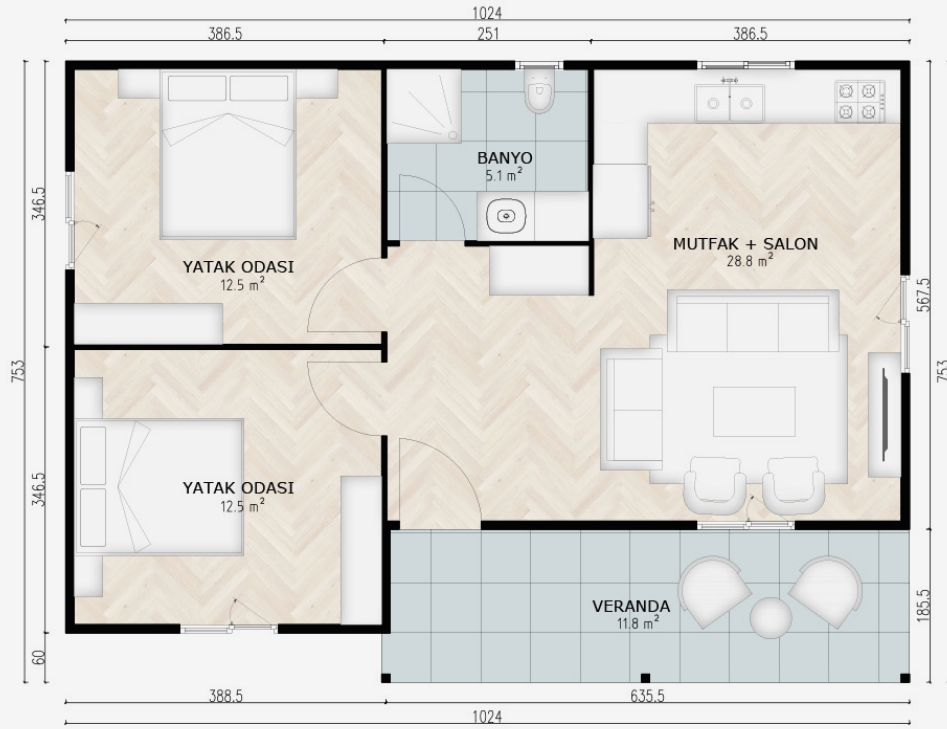
The PM-1072 project spans 72 m<sup>2</sup> with a 2+1 room layout. It combines affordability with a modern aesthetic, making it a popular choice for customers looking for a stylish and functional prefabricated home. It's suitable for long-term living or as a holiday house.





PM-1075





The PM-1075 project, slightly larger than the PM-1072 model, covers 75 m<sup>2</sup> and features a 2+1 room layout. This luxurious prefabricated structure caters to customers seeking an affordable yet elegant home. Its design ensures comfort, making it suitable for year-round living with your family and loved ones.





PM-1085





The PM-1085 project is an 85 m<sup>2</sup> prefabricated home with a 2+1 room layout. Its standout feature is the bay window in the living room, creating an open and airy ambiance. With its spacious design, this model is perfect for customers seeking a unique and roomy home.





PM-1100





The PM-1100 project covers 100 m<sup>2</sup> and features a 2+1 room layout. Custom-designed for a specific client, this prefabricated model boasts a large veranda that is perfect for family gatherings, leisurely breakfasts, or hosting vibrant parties. It is ideal for those who value spacious and functional outdoor living areas.





PT-2125



## First Floor:

Hallway: 6,6 m<sup>2</sup>•

Bedroom 1: 12.8 m<sup>2</sup>•

Bedroom 2: 12.8 m<sup>2</sup>•

Bedroom 3: 11.0 m<sup>2</sup>•

Bathroom: 4,8 m<sup>2</sup>•



## Ground Floor:

• Entrance Hall: 4,7 m<sup>2</sup>

• Kitchen: 9,7 m<sup>2</sup>

• Living Room: 24,3 m<sup>2</sup>

• Bathroom: 3,7 m<sup>2</sup>

• Veranda: 12,0 m<sup>2</sup>

• Entryway: 2,5 m<sup>2</sup>



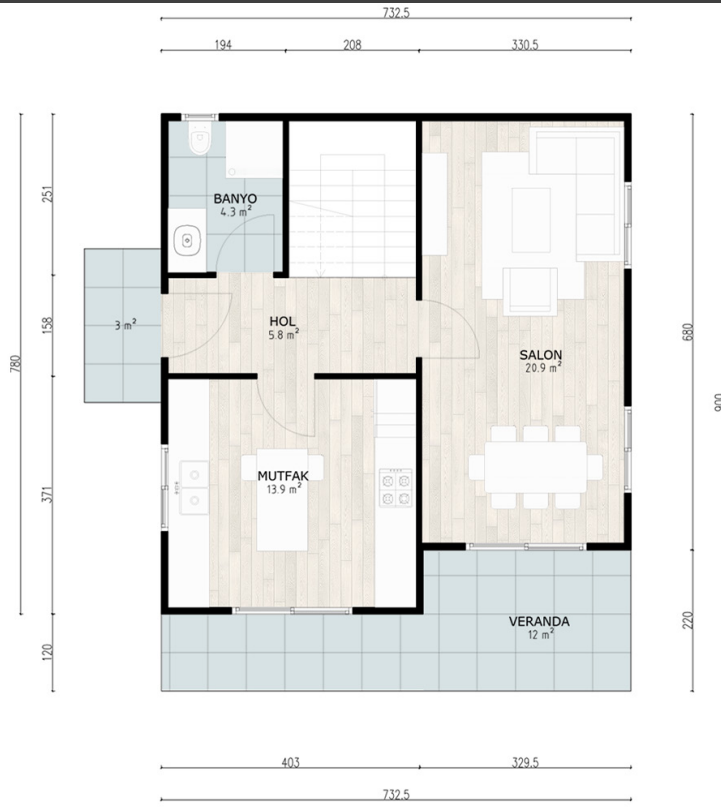
The PT-2125 project is a 125 m<sup>2</sup> two-story prefabricated model with a 3+1 room layout and a closed kitchen. With a main bathroom on each floor and a fiber cement exterior cladding, it ensures excellent thermal and sound insulation while delivering a natural wood-like aesthetic. The design's standout feature is the expansive veranda that enhances the overall living experience.





PT-2130





## Ground Floor:

- Entrance Hall: 5,8 m<sup>2</sup>
- Kitchen: 13,9 m<sup>2</sup>
- Living Room: 20,9 m<sup>2</sup>
- Bathroom: 4,3 m<sup>2</sup>
- Veranda: 12,0 m<sup>2</sup>
- Entryway: 3,0 m<sup>2</sup>

## First Floor:

- Hallway: 6,0 m<sup>2</sup>•
- Master Bedroom: 13,9 m<sup>2</sup>•
- Bedroom 1: 8,1 m<sup>2</sup>•
- Bedroom 2: 10,1 m<sup>2</sup>•
- Bathroom: 7,0 m<sup>2</sup>•
- Balcony: 7,0 m<sup>2</sup>•



The PT-2130 project spans 130 m<sup>2</sup> and features a 3+1 room layout with a closed kitchen. Designed with traditional architectural elements, this two-story prefabricated house includes a spacious veranda and a balcony, offering delightful spaces to enjoy morning coffee or sunset views.





PT-2185



## First Floor:

Hallway: 10,3 m<sup>2</sup>•

Dressing Room: 6,5 m<sup>2</sup>•

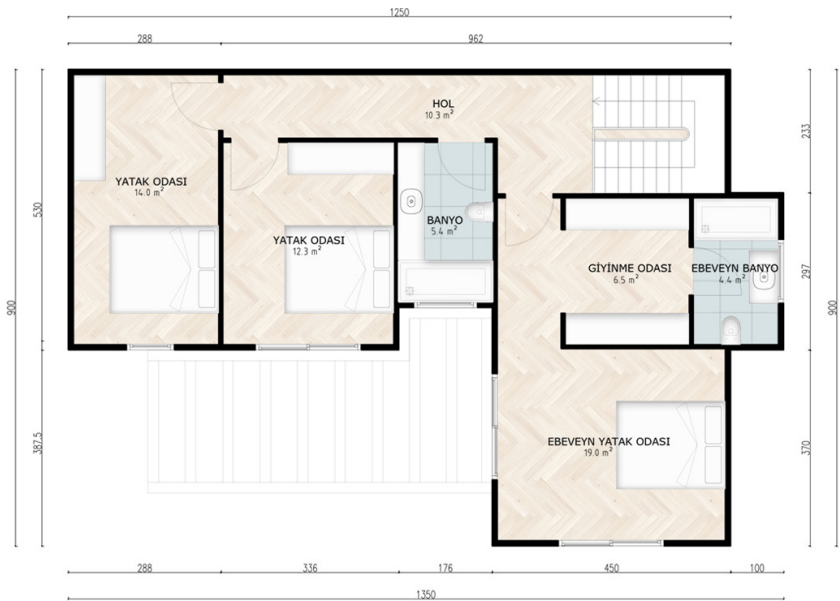
En-suite Bathroom: 4,4 m<sup>2</sup>•

Master Bedroom: 19,0 m<sup>2</sup>•

Bathroom: 5,4 m<sup>2</sup>•

Bedroom 1: 12,3 m<sup>2</sup>•

Bedroom 2: 14,0 m<sup>2</sup>•



## Ground Floor:

• Entrance Hall: 11,9 m<sup>2</sup>

• WC: 2,5 m<sup>2</sup>

• Kitchen: 16,1 m<sup>2</sup>

• Living Room: 34,9 m<sup>2</sup>

• Veranda: 22,7 m<sup>2</sup>

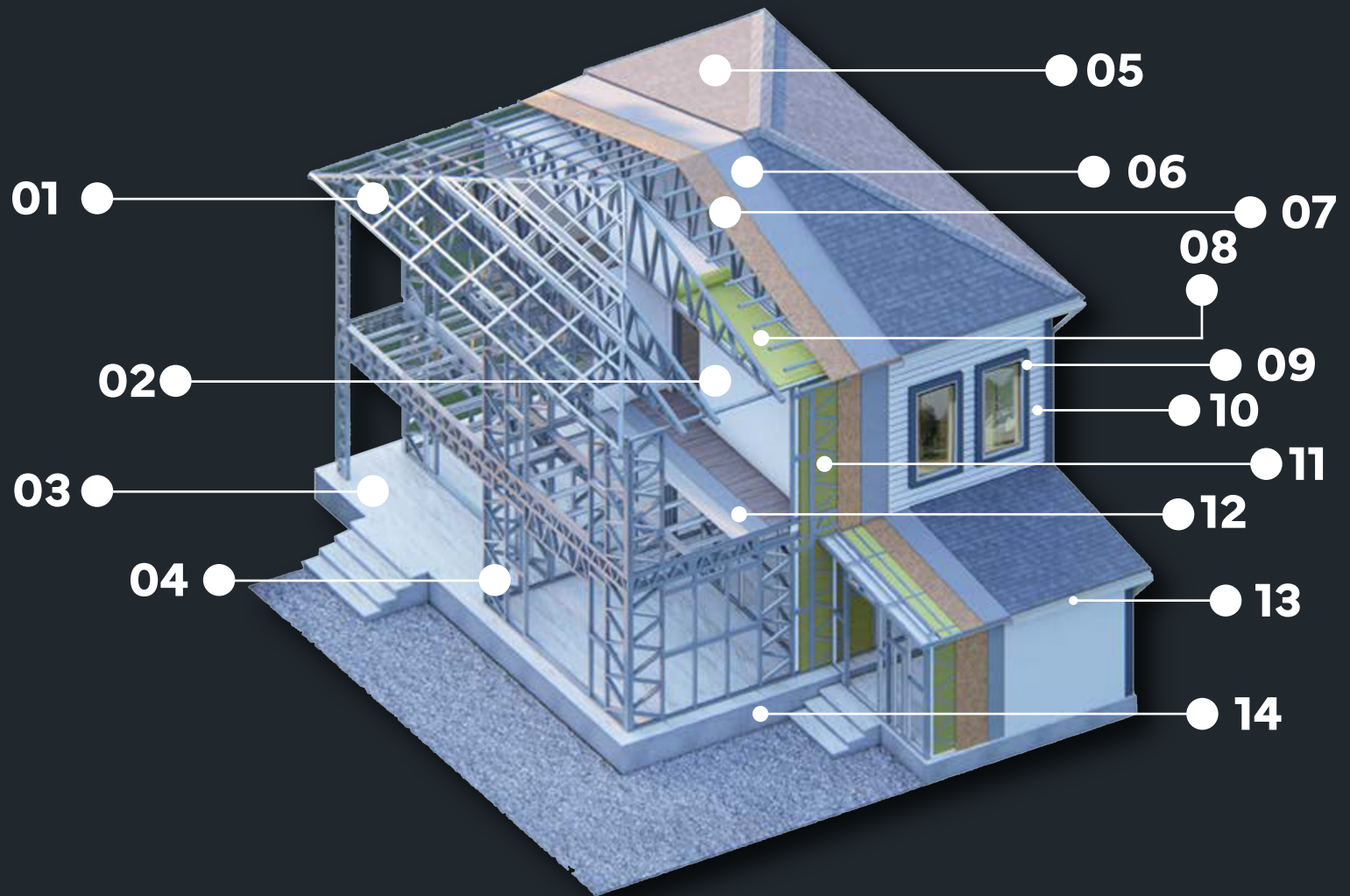
• Entryway: 2,1 m<sup>2</sup>



The PT-2185 project is a 185 m<sup>2</sup> two-story prefabricated home with a 3+1 room layout and a closed kitchen. Its modern design includes a master bedroom with an en-suite bathroom and a dressing room, providing personalized spaces for comfort and privacy. The exterior natural stone cladding and decorative plaster lend a luxurious aesthetic, while the four-gable roof exceeds standard design expectations.



# LIGHT GAUGE STEEL SECTION





# LIGHT GAUGE STEEL SECTION

- 01) Roof Truss:** A structural element forming the roof's support system using diagonal profiles.
- 02) Drywall:** Gypsum-based material used for interior walls and ceilings
- 03) Floor Coating:** Optional surface layer applied to leveled concrete for a polished finish.
- 04) Steel Framework:** Load-bearing structure created using galvanized steel profiles.
- 05) Roof Covering:** The outermost protective layer of the roof. (Material optional)
- 06) Moisture Barrier:** A layer applied over the initial coating for insulation purposes.
- 07) OSB:** Water-, moisture-, and impact-resistant wood-based material. (Material optional)
- 08) Roof Insulation:** Durable and fire-resistant mineral wool used for thermal and sound insulation.
- 09) PVC Window Frame:** Plastic composite frames for windows.
- 10) Fiber Cement Board:** Cement-based decorative cladding material with a wood-like appearance.
- 11) Mineral Wool:** Fireproof and durable fiber material for insulation purposes.
- 12) Leveling Screed:** A thin layer of concrete used to create a smooth surface on the floor.
- 13) Metal Gutter:** A system to collect and redirect rainwater, made of metal.
- 14) Ground Concrete:** Durable and sturdy concrete layer used as the ground base.





SM-1082





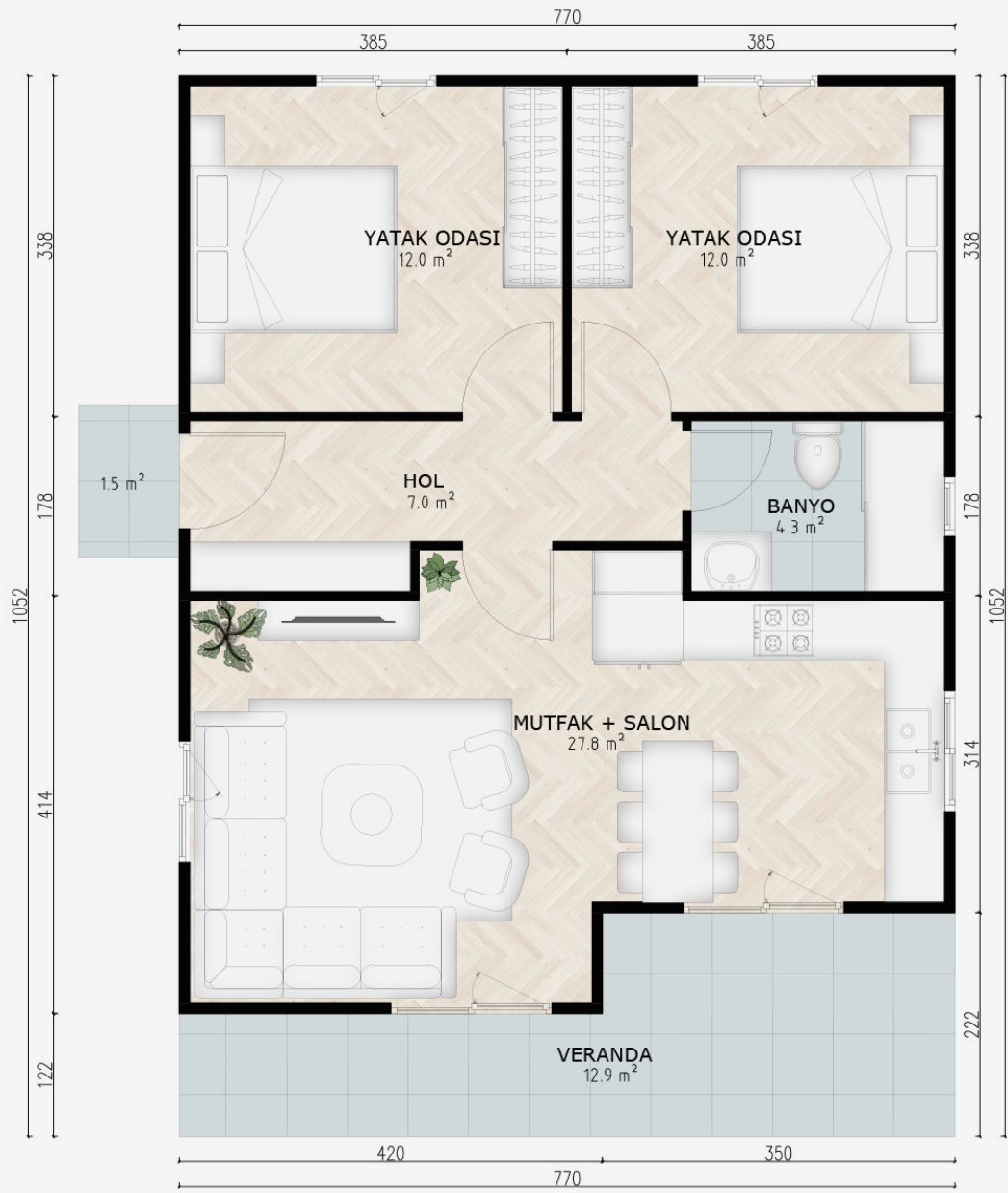
The SM-1082 project spans a total area of 82 m<sup>2</sup> and features a 2+1 room layout. Designed to create spacious living areas in an affordable structure, it uses a light steel construction. The natural stone-patterned cladding on the veranda not only contributes to thermal and sound insulation but also provides an aesthetic appearance. Perfect for customers dreaming of a mountain retreat and wanting to feel at the heart of nature.





SM-1083





The SM-1083 project covers a total area of 83 m<sup>2</sup> and has a 2+1 room layout. It is a revised, more affordable, and minimalist version of the SM-1095 project. Fiber cement cladding on the veranda enhances thermal and sound insulation while offering the aesthetic of natural wood. This modern design is ideal for living comfortably all year round, whether in the city center or the countryside.





SM-1085





The SM-1085 project is an 85 m<sup>2</sup> light steel construction home with a 2+1 room layout and a closed kitchen. Its veranda features fiber cement cladding that improves thermal and sound insulation while adding the natural aesthetic of wood. The high-pitched gable roof is specifically designed to withstand strong winds and heavy snow loads, making it particularly suitable for colder climates.





SM-1090





The SM-1090 project spans 90 m<sup>2</sup> and features a 2+1 room layout with a closed kitchen. It boasts a spacious veranda where you can enjoy breakfast while admiring the scenery. The large living room windows bring the view into your home, and the kitchen's sliding door provides easy access to the veranda for convenience and functionality.





SM-1093





The SM-1093 project is a 93 m<sup>2</sup> light steel construction home with a 2+1 room layout and a closed kitchen. Its four-gable roof showcases the durability and security of light steel construction. The design successfully combines modern aesthetics with classical architectural lines for an elegant and visually appealing structure.





SM-1094





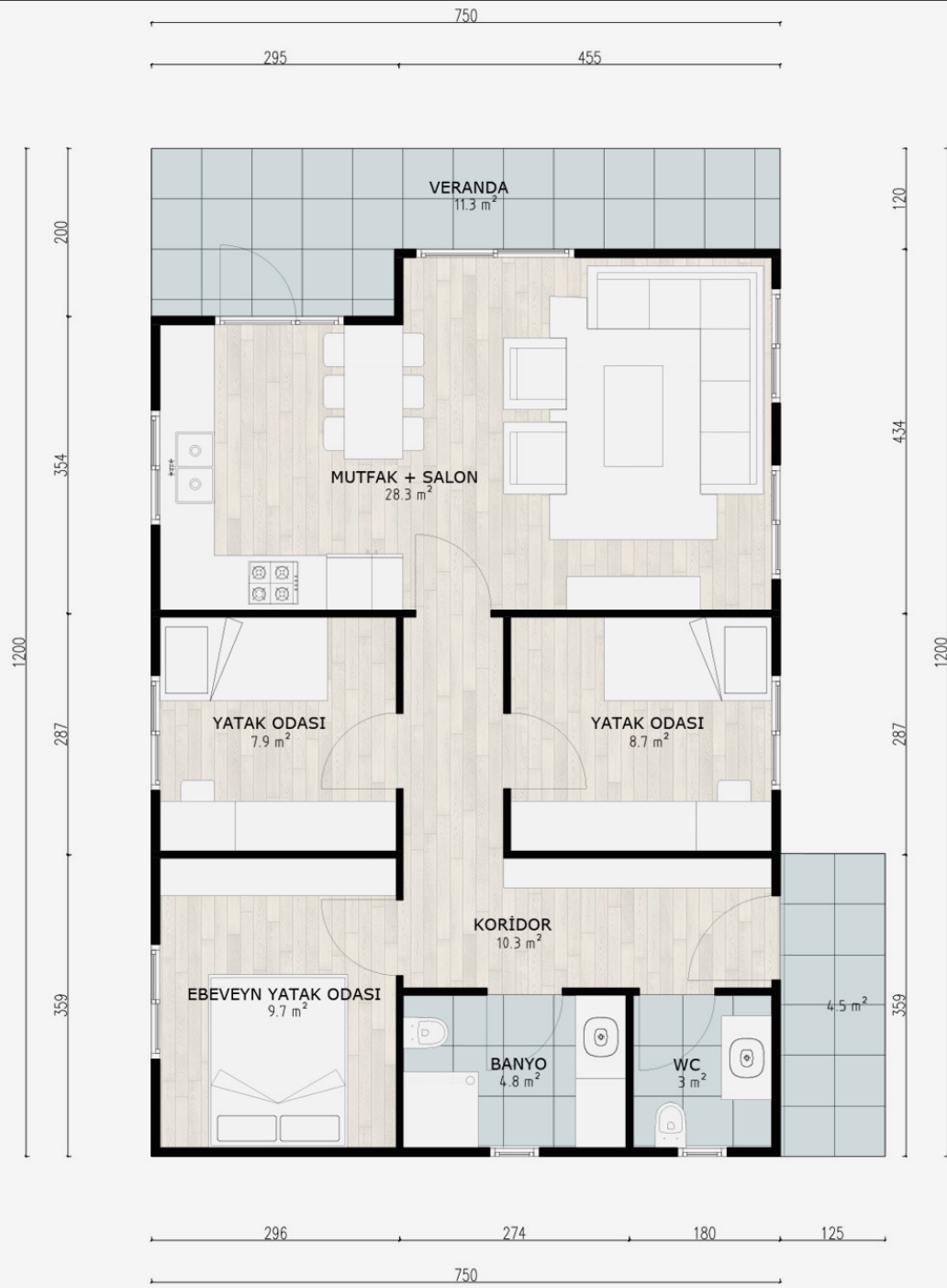
The SM-1094 project, covering 94 m<sup>2</sup>, features a 2+1 room layout with an open kitchen. This model is a veranda-free version of the SM-1102 project and stands out with its bespoke, oversized windows, which add a regal touch to the house. Combining modern and classic aesthetics, this design brings a unique sense of luxury to any home.





SM-1095





The SM-1095 project spans 94,5 m<sup>2</sup> and offers a 3+1 room layout with an open kitchen. It features a spacious veranda perfect for breakfasts and includes a master bedroom with an en-suite bathroom, making it ideal for large families to enjoy their time together comfortably.





SM-1100





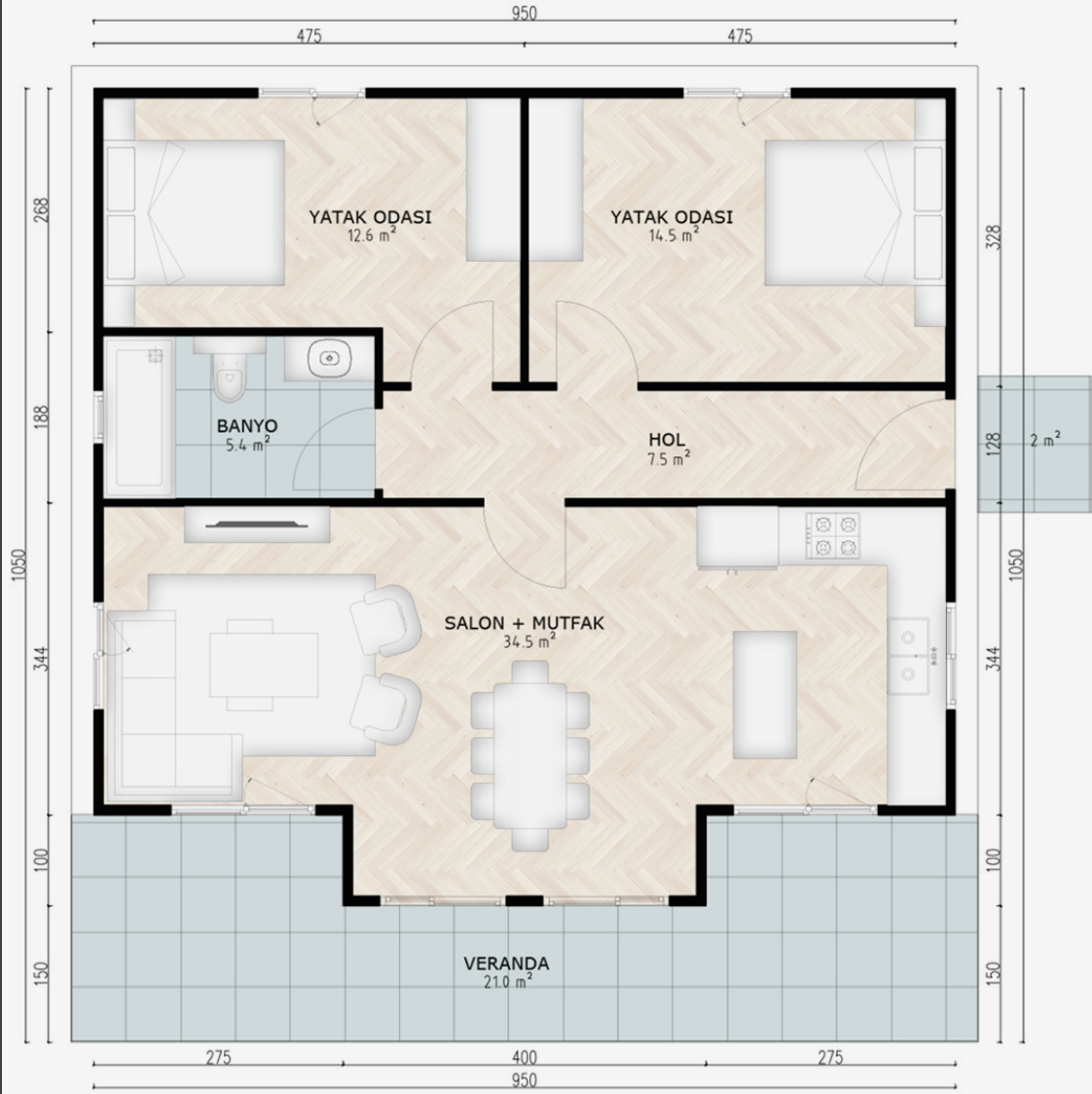
The SM-1100 project covers a total area of 100 m<sup>2</sup>, offering a 2+1 room layout with a closed kitchen. Its L-shaped veranda connects to the kitchen from both directions and directly to the living room, providing seamless indoor-to-outdoor transitions. The master bedroom includes an en-suite bathroom, and the expansive windows in all rooms, including the living room, create a bright and airy environment.





SM-1102





The SM-1102 project spans 102 m<sup>2</sup> with a 2+1 room layout and an open kitchen. It features large custom-cut windows, bringing panoramic views directly into your home. This design combines traditional and modern elements, offering a timeless structure that merges the past and the present.





SM-11110





The SM-1110 project is a 110 m² light steel construction home with a 2+1 room layout and a closed kitchen. It creates a spacious and airy environment with its 4,5-meter-high ceilings. The design incorporates custom windows that allow ample sunlight and provide an immersive connection to nature.





SM-1190





The SM-1190 project is a twin villa design, with each unit covering 95 m². Designed with large families and close-knit friends in mind, this structure offers the strength and durability of light steel construction. Its European-inspired style ensures a visually striking and functional living space.





SM-11095





The SM-11095 project is a 95 m² light steel construction home featuring a 2+1 room layout and an open kitchen. The brick-patterned cladding on the veranda enhances its aesthetic appeal. This design is practical, affordable, and suitable for year-round living as a home or office.





ST-2118



## 1. Kat Planı

Hallway:	3,0 m <sup>2</sup> •
Bedroom 1:	18,1 m <sup>2</sup> •
Bedroom 2:	11,4 m <sup>2</sup> •
Balcony:	10,5 m <sup>2</sup> •
Bathroom:	5,8 m <sup>2</sup> •

## Ground Floor:

- Entrance Hall: 6,1 m<sup>2</sup>
- Kitchen: 11,4 m<sup>2</sup>
- Living Room: 18,1 m<sup>2</sup>
- WC: 2,7 m<sup>2</sup>
- Veranda: 10,5 m<sup>2</sup>
- Entryway: 2,0 m<sup>2</sup>



The ST-2118 project is a 118 m<sup>2</sup> light steel construction home with a 2+1 room layout. It features a closed kitchen, a spacious balcony, and a large veranda. The upper floor includes sliding windows that open onto the balcony from both bedrooms, offering scenic views to begin your day.





ST-2120

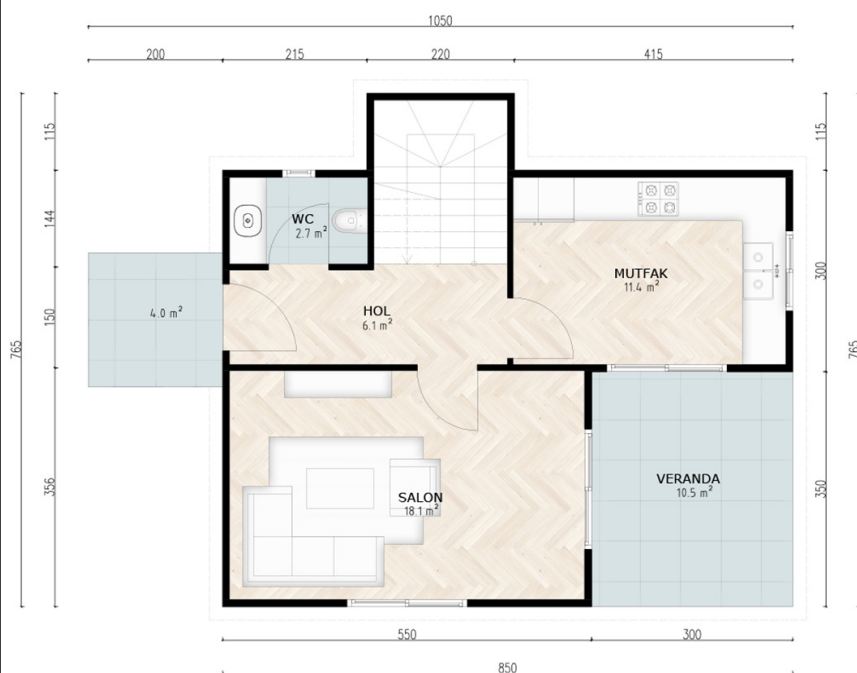


## First Floor

- Hallway: 3,0 m<sup>2</sup>•
- Bedroom 1: 18,1 m<sup>2</sup>•
- Bedroom 2: 11,4 m<sup>2</sup>•
- Balcony: 10,5 m<sup>2</sup>•
- Bathroom: 5,8 m<sup>2</sup>•

## Ground Floor:

- Entrance Hall: 6,1 m<sup>2</sup>
- Kitchen: 11,4 m<sup>2</sup>
- Living Room: 18,1 m<sup>2</sup>
- WC: 2,7 m<sup>2</sup>
- Veranda: 10,5 m<sup>2</sup>
- Entryway: 4,0 m<sup>2</sup>



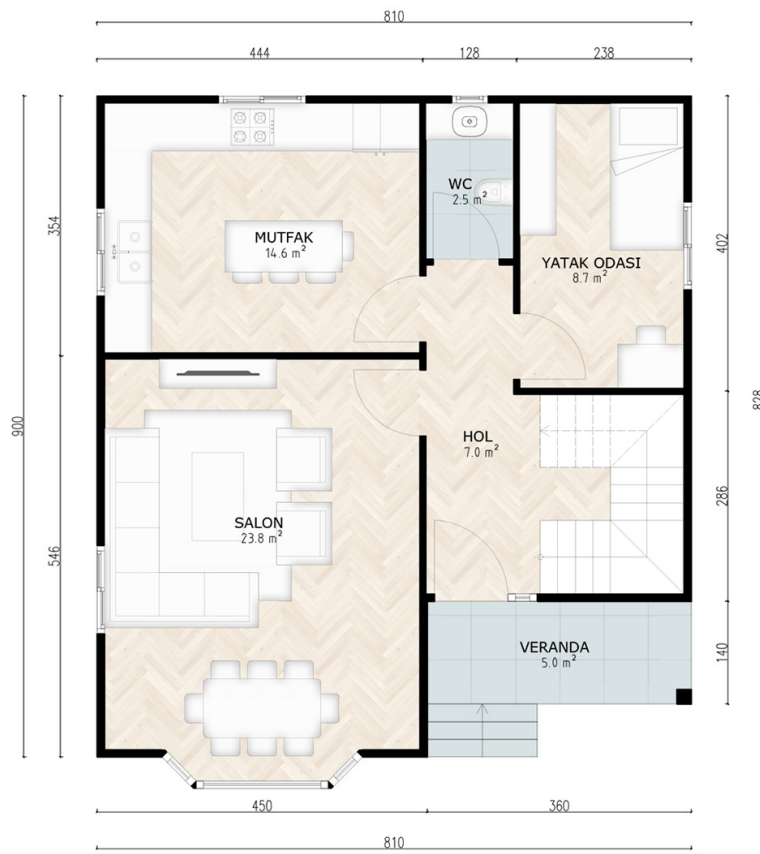
The ST-2120 project spans 120 m<sup>2</sup> and features a 2+1 room layout. It is a more traditional design compared to the ST-2118 project. The modern lines of the façade are complemented by decorative touches, blending contemporary and classic architectural styles.





ST-2144





## Ground Floor:

- Entrance Hall: 7,0 m<sup>2</sup>
- Bedroom: 8,7 m<sup>2</sup>
- WC: 2,5 m<sup>2</sup>
- Kitchen: 14,6 m<sup>2</sup>
- Living Room: 23,8 m<sup>2</sup>
- Veranda: 5,0 m<sup>2</sup>

## First Floor:

- Hallway: 7,0 m<sup>2</sup>•
- Bedroom 1: 18,4 m<sup>2</sup>•
- M.Bedroom: 20,0 m<sup>2</sup>•
- En-suite Bathroom: 4,0 m<sup>2</sup>•
- Bathroom: 7,3 m<sup>2</sup>•
- Balcony: 5,0 m<sup>2</sup>•



The ST-2144 project is a luxurious 144 m<sup>2</sup> two-story light steel construction home with a 3+1 room layout. It features a stunning fully glass bay window design and a four-gable roof system, providing both visual and functional elegance. Large windows ensure spacious and bright interiors.





ST-2155





## Ground Floor:

- Entrance Hall: 6,1 m<sup>2</sup>
- Bathroom: 5,5 m<sup>2</sup>
- Kitchen: 12,6 m<sup>2</sup>
- Living Room: 35,4 m<sup>2</sup>
- Veranda: 14,8 m<sup>2</sup>
- Entryway: 2,0 m<sup>2</sup>

## First Floor:

- Hallway: 5,3 m<sup>2</sup>•
- Bedroom 1: 12,6 m<sup>2</sup>•
- M.Bedroom: 17,8 m<sup>2</sup>•
- Bedroom 2: 14,6 m<sup>2</sup>•
- Bathroom: 8,9 m<sup>2</sup>•



The ST-2155 project is a 155 m<sup>2</sup> two-story light steel construction home with a 3+1 room layout and a closed kitchen. It was designed as an alternative for customers who wanted to see the SM-1110 project in a two-story format. It features custom oversized windows for a unique, luxurious, and functional design.





ST-2164





## Ground Floor:

- Entrance Hall: 7,1 m<sup>2</sup>
- WC: 4,0 m<sup>2</sup>
- Living Room: 24,6 m<sup>2</sup>
- Kitchen: 13,6 m<sup>2</sup>
- Veranda: 18,0 m<sup>2</sup>
- Entryway: 2,5 m<sup>2</sup>

## First Floor:

- Hallway: 6,1 m<sup>2</sup>•
- M.Bedroom: 15,5 m<sup>2</sup>•
- En-suite Bathroom: 3,2 m<sup>2</sup>•
- Bedroom 1: 11,1 m<sup>2</sup>•
- Bedroom 2: 12,6 m<sup>2</sup>•
- Bathroom: 6,0 m<sup>2</sup>•
- Balcony: 20,8 m<sup>2</sup>•



The ST-2164 project spans 164 m<sup>2</sup> and features a 3+1 room layout. It is a two-story light steel construction model with a closed kitchen and a 20.8 m<sup>2</sup> balcony that wraps around two sides of the house. This design combines modern and luxurious aesthetics with functional living spaces, ideal for residential or office use.





ST-2185



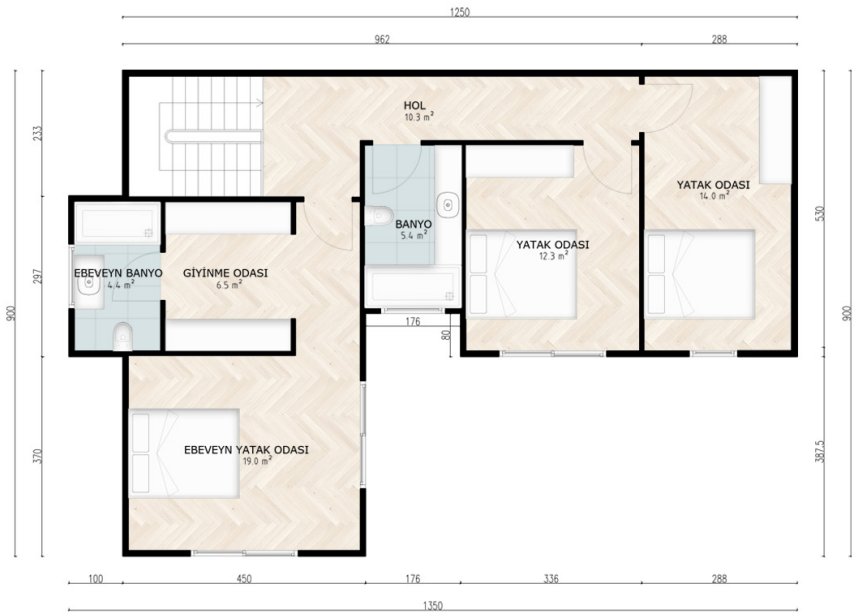


## Ground Floor:

- Entrance Hall: 11,9 m<sup>2</sup>
- Living Room: 34,9 m<sup>2</sup>
- Kitchen: 16,1 m<sup>2</sup>
- WC: 2,5 m<sup>2</sup>
- Veranda: 22,7 m<sup>2</sup>
- Entryway: 2,1 m<sup>2</sup>

## First Floor:

- Hallway: 10,3 m<sup>2</sup>•
- Bedroom 1: 14,0 m<sup>2</sup>•
- Bedroom 2: 12,3 m<sup>2</sup>•
- Bathroom: 5,4 m<sup>2</sup>•
- M.Bedroom: 19,0 m<sup>2</sup>•
- Dressing Room: 6,5 m<sup>2</sup>•
- En-suite Bathroom: 4,4 m<sup>2</sup>•



The ST-2185 project is a 185 m<sup>2</sup> two-story light steel construction home with a 3+1 room layout and a closed kitchen. Designed with spacious interiors, it features a large veranda of 22.7 m<sup>2</sup> where families can create beautiful memories. The structure emphasizes both modern aesthetics and comfort.





ST-2213



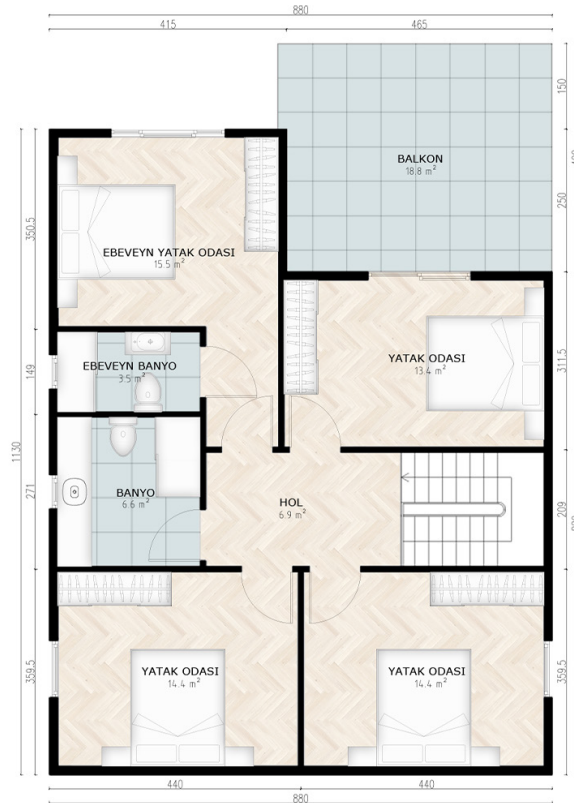


## Ground Floor:

- Foyer: 12,6 m<sup>2</sup>
- Pantry: 6,4 m<sup>2</sup>
- Bathroom: 5,5 m<sup>2</sup>
- Study Room: 12,9 m<sup>2</sup>
- Living Room: 34,0 m<sup>2</sup>
- Mutfak: 13,4 m<sup>2</sup>
- Kitchen: 10,0 m<sup>2</sup>

## First Floor:

- Hallway: 6,9 m<sup>2</sup>•
- Bedroom 1: 14,4 m<sup>2</sup>•
- Bedroom 2: 14,4 m<sup>2</sup>•
- Bathroom: 6,6 m<sup>2</sup>•
- En-suite Bathroom: 3,5 m<sup>2</sup>•
- M.Bedroom: 15,5 m<sup>2</sup>•
- Bedroom 3: 13,4 m<sup>2</sup>•
- Balcony: 18,8 m<sup>2</sup>•



The ST-2213 project spans 213 m<sup>2</sup> and features a 5+1 room layout. Designed as the "jewel" of the company's portfolio, this model is the embodiment of luxury living. Its large and functional spaces make it ideal for those with high expectations and refined tastes.





# CURRENT

PRODUCT CATALOG